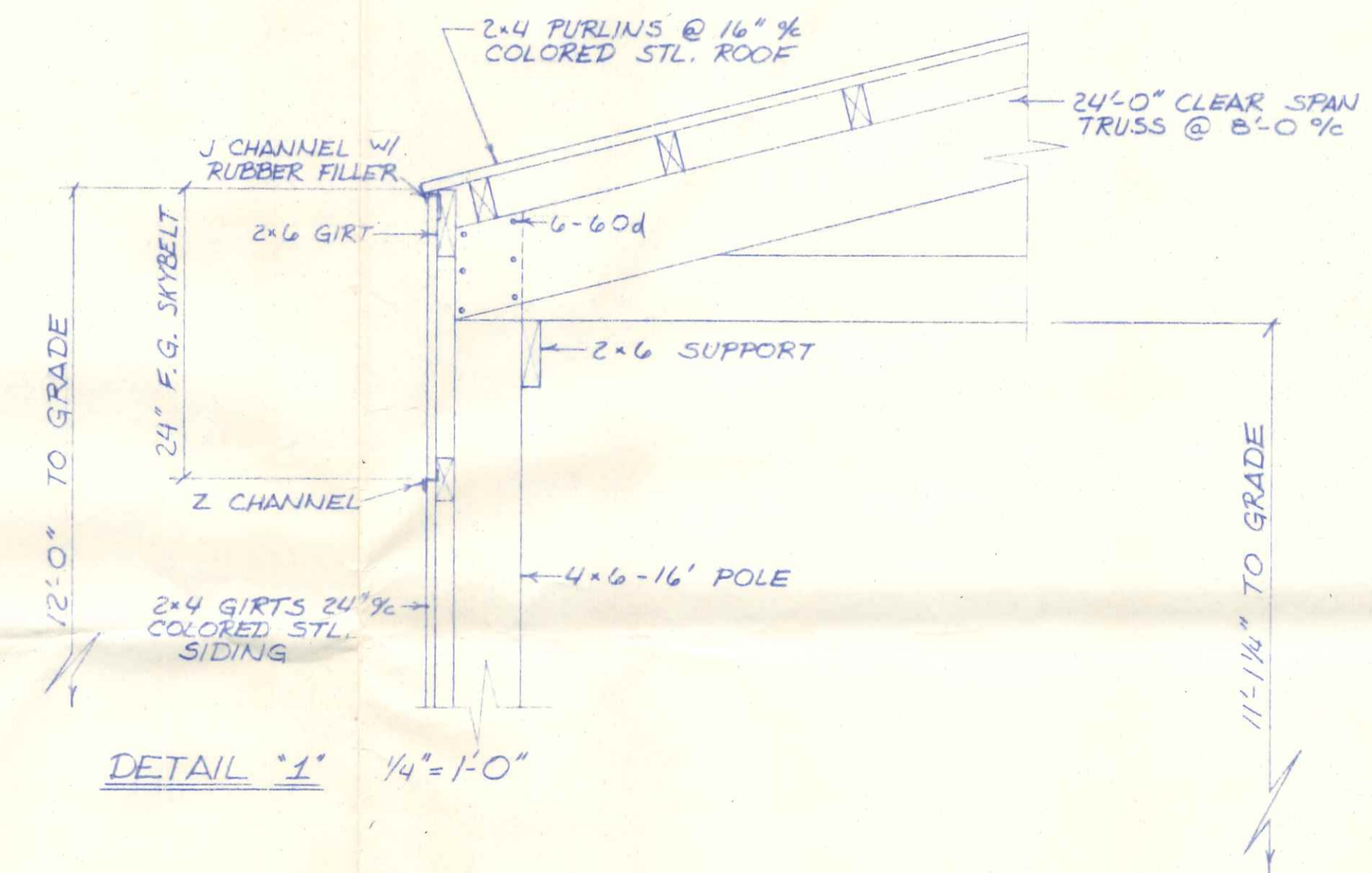
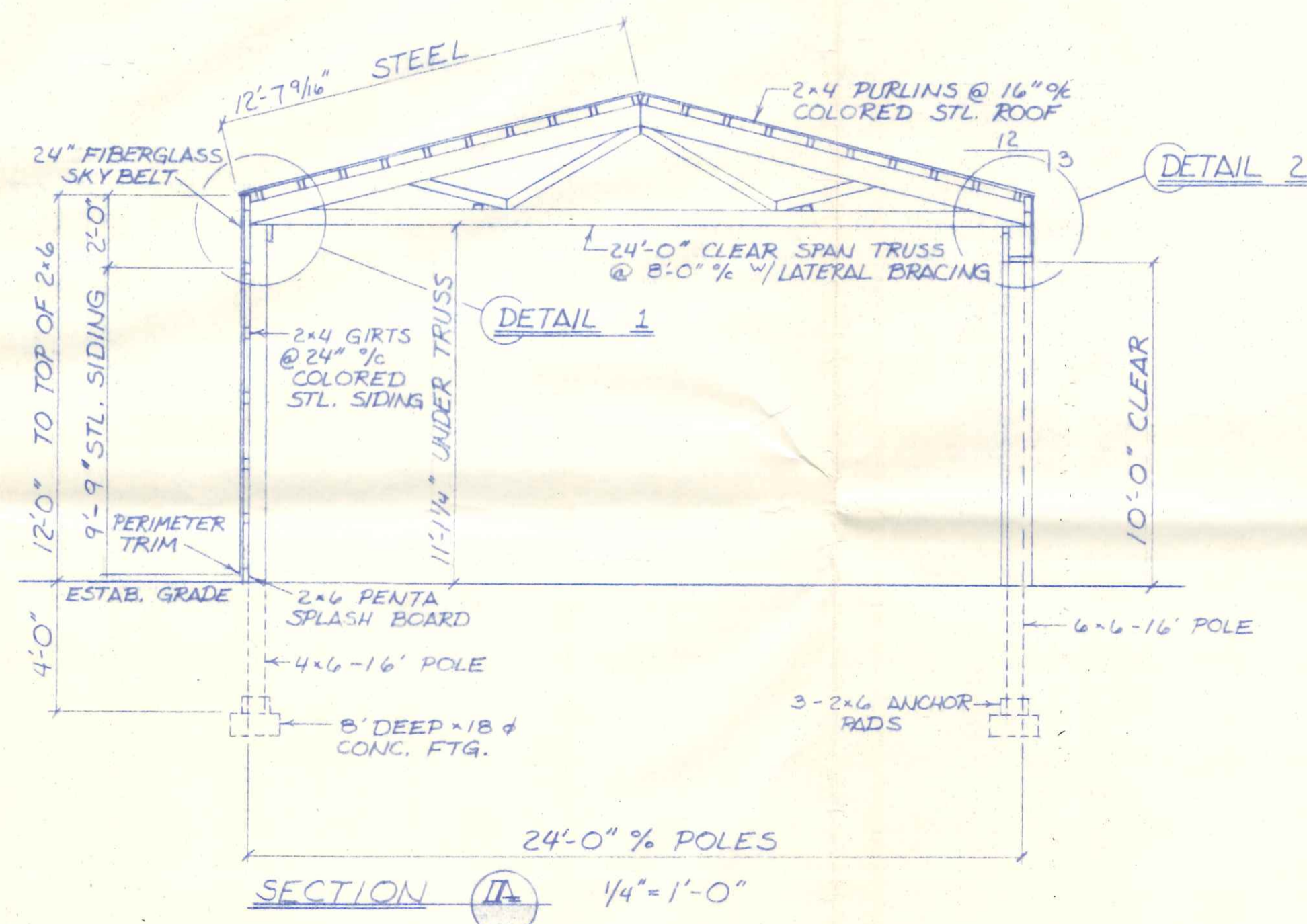
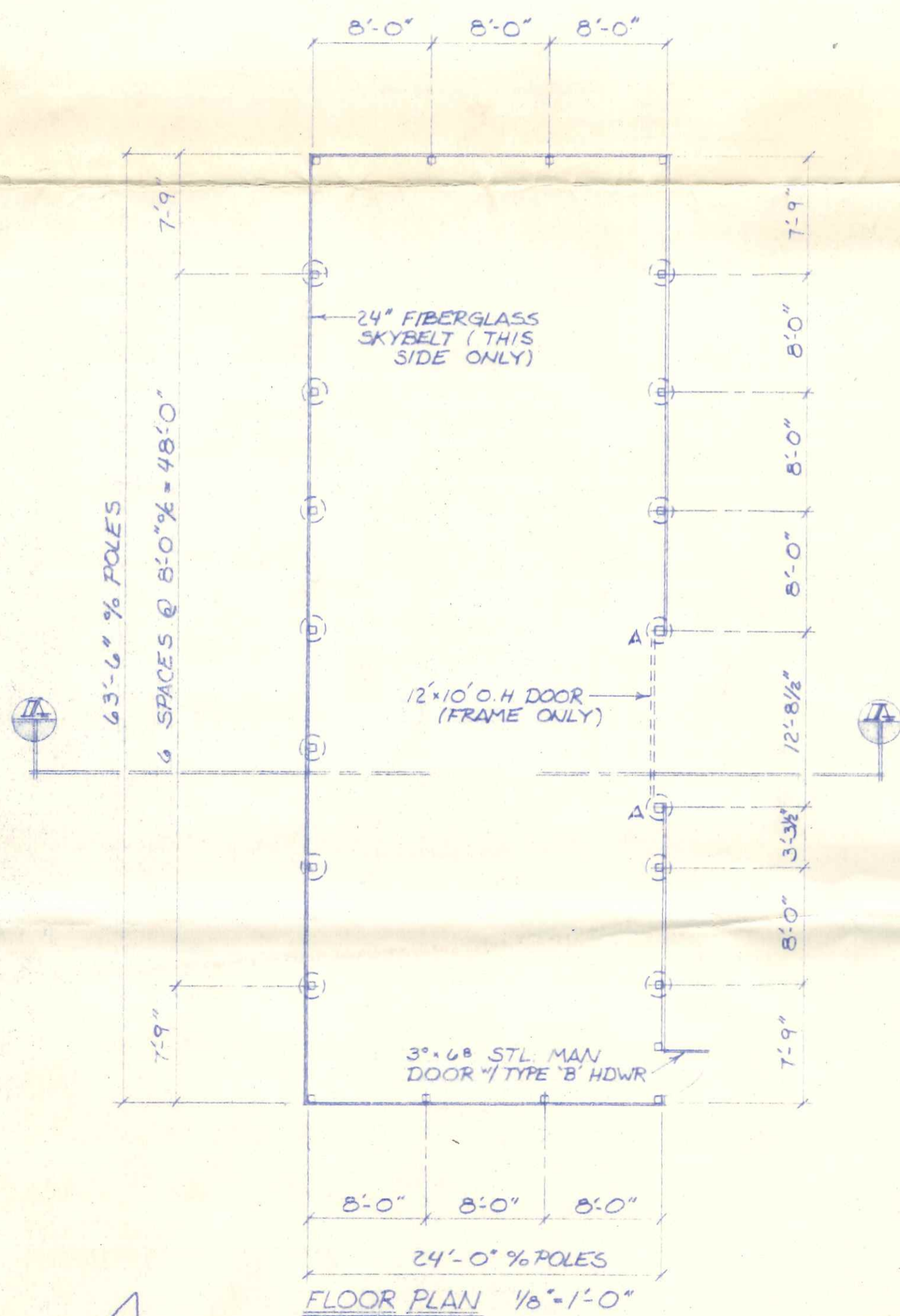
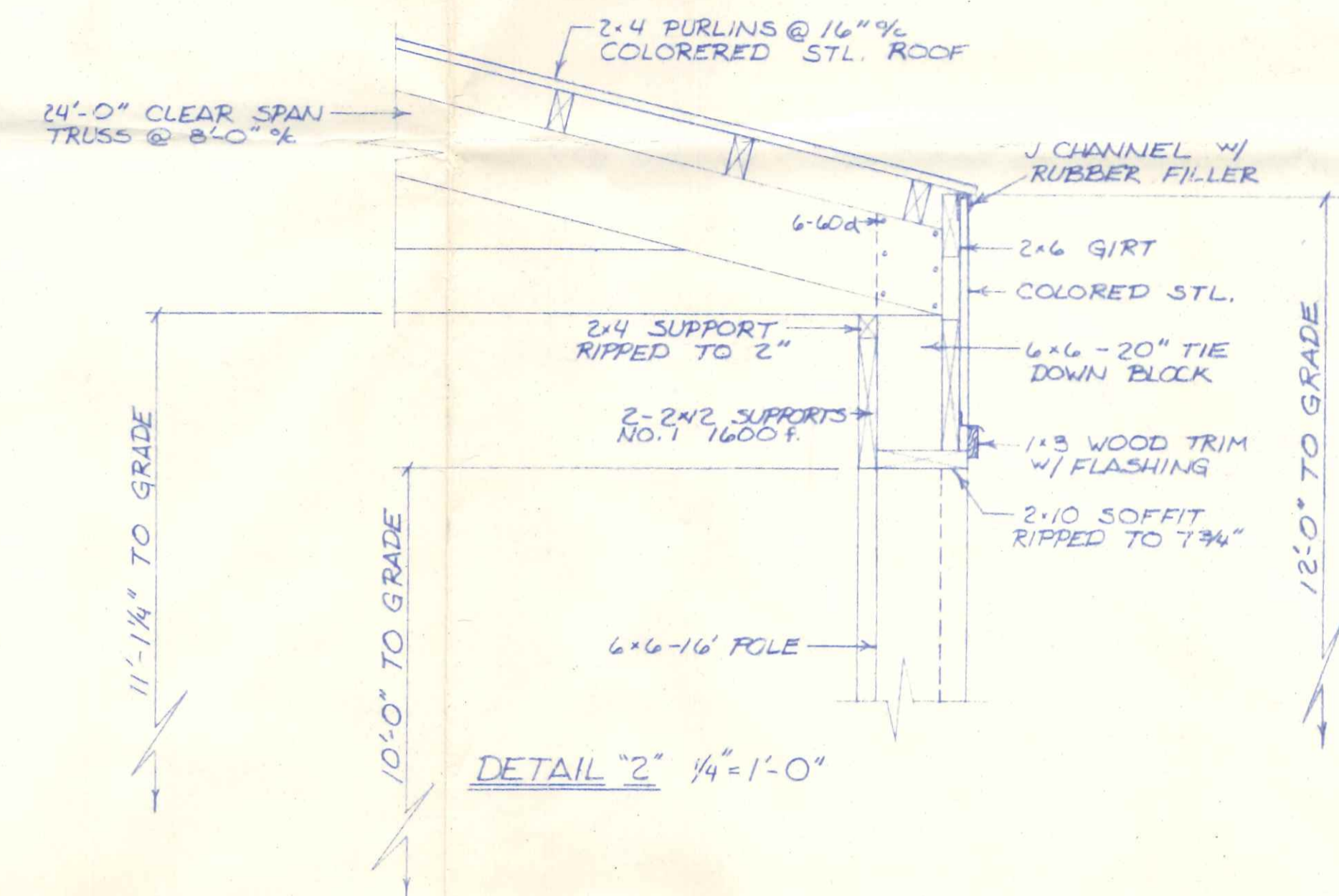
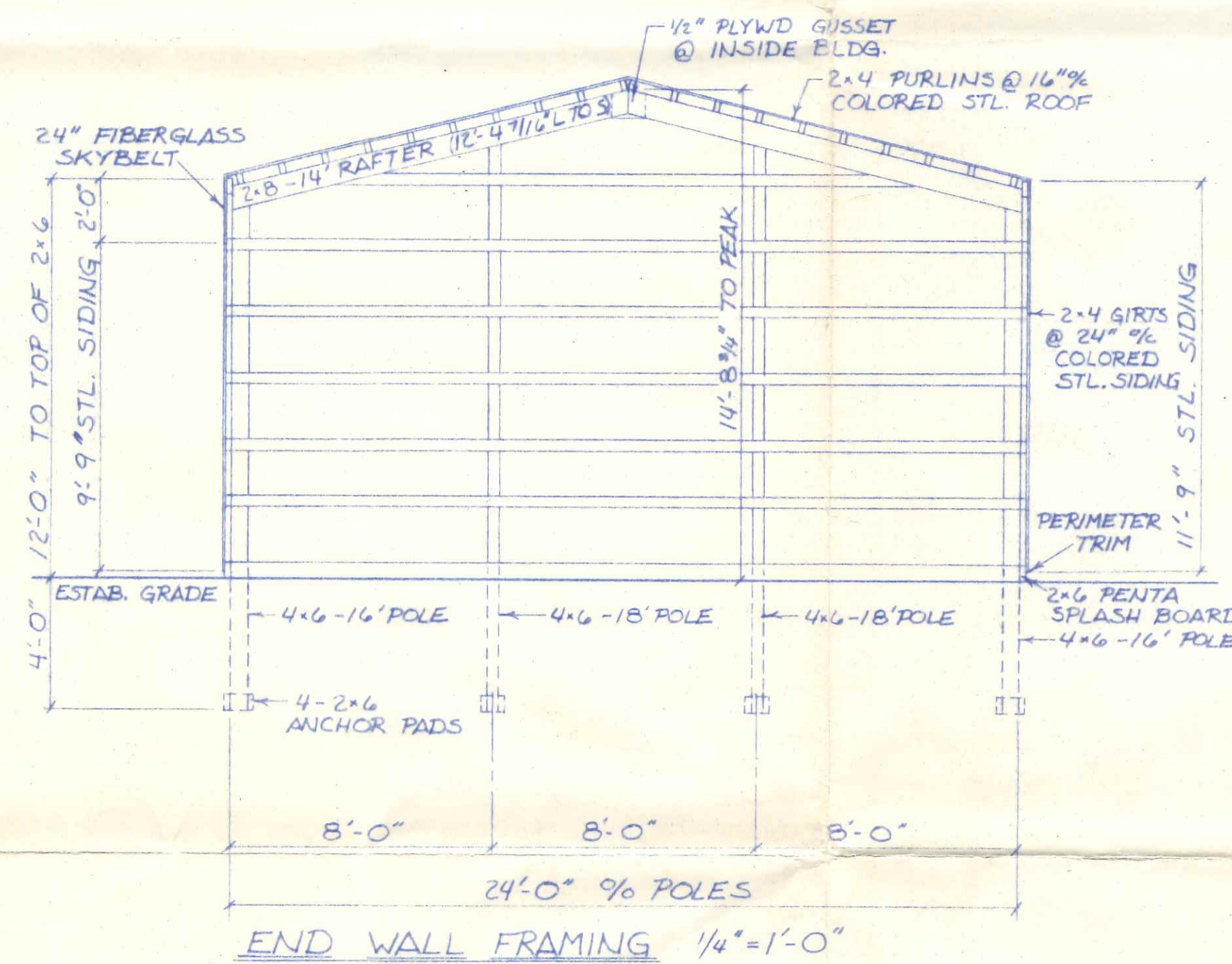
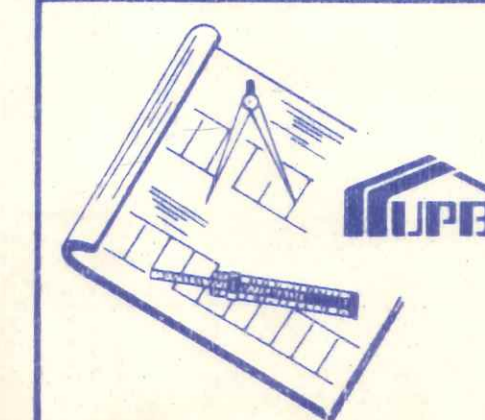


GENERAL NOTES

ALL 'A' POLES TO BE 6x6
ALL OTHERS TO BE 4x6
ALL POLES TO BE 4'-0" BELOW GRADE
ALL POLES w/ CONC. FTG. TO HAVE 3-2x6 ANCHOR PADS
ALL POLES w/ CONC. FTG. TO HAVE 4-2x6 ANCHOR PADS
O DENOTES 8" DEEP x 18" x CONC. FTG.



1100 Downshire
Umbaugh Pole Building Co., Inc.



PROPOSED	24' x 64' STORAGE BLDG.
DESIGNED BY	THOMAS P. WILLIAMS
DATE	10/31/78
DRAWN BY	R. Buss
SCALE	NOTED
APPROVED BY	
REVISIONS	
DRAWING NO.	C-78-168

USAGE RESTRICTIONS
THE USE OF THESE PLANS AND SPECIFICATIONS SHALL BE RESTRICTED TO SITES DESIGNATED BY UMBAUGH POLE BUILDING CO., INC. AND PUBLICATION THEREOF IS EXPRESSLY LIMITED TO SUCH USE. REUSE, REPRODUCTION OR PUBLICATION BY ANY METHOD IN WHOLE OR IN PART IS PROHIBITED. TITLE TO THE PLANS REMAINS IN THE NAME OF THE UMBAUGH POLE BUILDING CO., WITHOUT PREJUDICE.
VISUAL CONTACT WITH THESE PLANS AND SPECIFICATIONS SHALL CONSTITUTE PRIMA FACIE EVIDENCE OF THE ACCEPTANCE OF THESE RESTRICTIONS.



DESIGNED IN ACCORDANCE WITH TPI-74 AND 1973 NOS

TYPE = 700
 SPAN = 24 FT. - 0 IN.
 SPACING = 8 FT. - 0 IN. ON CENTER
 SHORT TERM LOADING INCREASES
 LUMBER STRESSES INCREASED = 1.15
 PLATE RATING INCREASED = 1.15
 MAX. PURLIN SPACING = 24 IN. PURLINS TO BE DESIGNED BY OTHERS.
 2 LINES OF LATERAL BRACING AT MAX. SPACING OF 11 FT. O.C.
 ARE REQUIRED ON THE BOTTOM CHORD
 TOP CHORD SLOPE = 3.000/12
 BUTT CUT = 0.25 INCHES
 CAMBER = 3/8" @ $\frac{1}{2}$ L

UNIFORM LOADING
 TOP CHORD LL = 30.0 PSF
 DL = 6.0 PSF
 BOT CHORD LL = 0.0 PSF
 DL = 0.5 PSF
 TOTAL LOAD = 36.5 PSF

JOINT	PLATE SIZE	PLATE LOCATION	JOINT TYPE
J 1	6 1/2 X 10 1/2 H		1
J 2	3 1/8 X 4 D		4
J 3	5 1/8 X 8 D	BIN 2 5/8 IN	3
J 7	4 1/8 X 8 D	BIN	2

JOINTS MARKED *** HAVE NO SYMMETRICAL MATCH
 ** SPLICES BASED ON 16 FOOT MAXIMUM LENGTH LUMBER **
 C 6 IS 4 1/4 X 10 1/2 H

H = 16 GA. (183 PSI USING NET PLATE CONTACT AREA)
 D = 20 GA. (223 PSI USING NET PLATE CONTACT AREA)

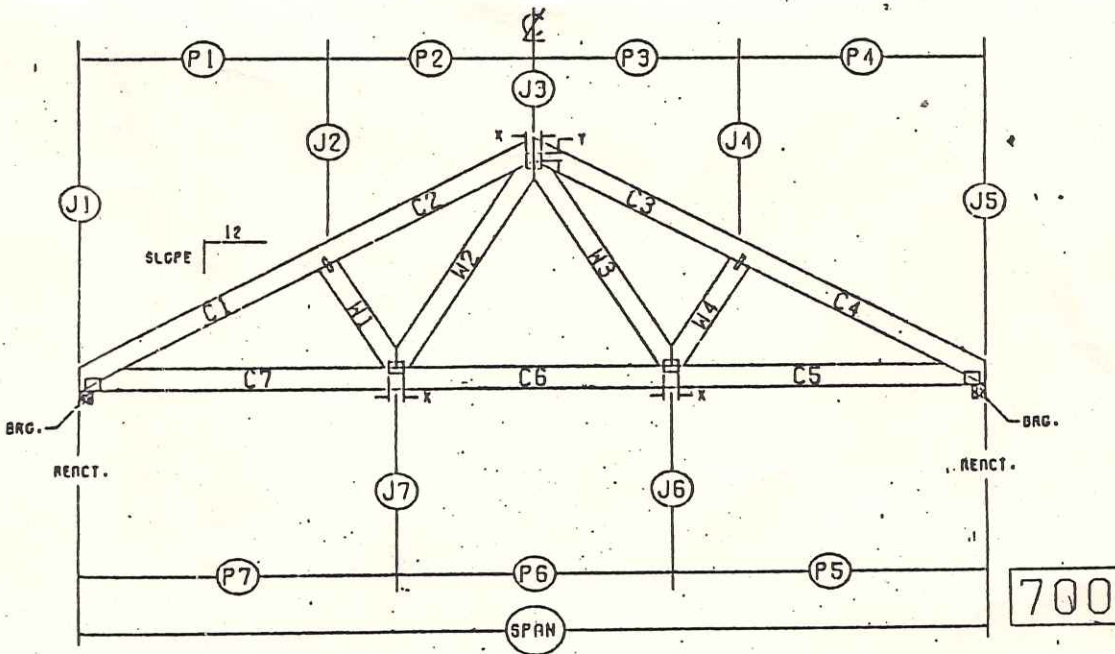
WEBS ARE TO BE 2X 4 NO 3 KD SOUTHERN PINE

*** TRUSS IS SYMMETRICAL ABOUT THE CENTERLINE ***

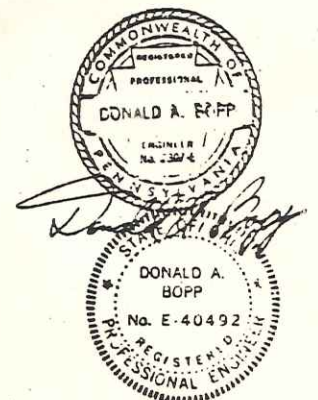
PANEL	LENGTH	CHORD	FORCE	WEB	FORCE	JOINT	LOAD	REACT
P 1	6 FT 10- 8/16 IN	C 1	-10294	W 1	-1951	J 1	1007	-3504
P 2	5 FT 1- 8/16 IN	C 2	-8876	W 2	2144	J 2	1728	
P 6	6 FT 10- 0/16 IN	C 6	7000			J 3	1476	
P 7	8 FT 7- 0/16 IN	C 7	9987			J 7	30	

TOP CHORD IS 2X8 NO 1 KD SOUTHERN PINE F=1600 T= 840 C=1450
 STRESS FACTOR= 1.086
 BOT CHORD IS 2X6 NO 1 KD SOUTHERN PINE F=1600 T=1050 C=1450
 STRESS FACTOR= 1.181

2X 6 MINIMUM BEARING REQUIRED AT J 1 AND J 5



This is to certify that the undersigned has examined the information hereon and it conforms to the design criteria and loading shown.



JUL 20 1977

PLEASE READ REVERSE SIDE FOR ADDITIONAL INFORMATION, FABRICATION INSTRUCTIONS, AND NOTICES.



HYDRO-AIR CLAIMS PROPRIETARY RIGHTS TO THE MATERIAL DISCLOSED HEREON. THIS DRAWING AND/OR TECHNICAL INFORMATION IS ISSUED IN CONFIDENCE FOR ENGINEERING INFORMATION ONLY AND MAY NOT BE REPRODUCED WITHOUT EXPRESS PERMISSION OF HYDRO-AIR ENGINEERING, INC.

NOTES:

- CUT ALL MEMBERS TO BEAR.
- CENTER ALL PLATES ON JOINTS UNLESS OTHERWISE NOTED.
- INDICATED CHORD SPLICES SHALL BE LOCATED 1/4 OF THE PANEL LENGTH ($\pm 6"$) MEASURED FROM A JOINT.